



**Advertising in**

**LED Light**

**A professional effect at trade shows, events,  
and points of sale ✨**

**LED BOX & LUMIX**

■ Why illuminated walls?	3
■ LED BOX	4
■ LED BOX FLEX	5
■ LUMIX System	6
■ LUMIX Counter	7
■ LED BOX Counter	8
■ LED BOX WALL	9

## ■ Why illuminated walls?

Light is the best way to grab attention. LED BOX and LUMIX illuminated counters and walls are designed for brands that want to be visible in every space – at trade shows, events, showrooms, or points of sale.

- **Energy-efficient LED**

Intense lighting effect with low energy consumption.

- **Interchangeable graphics**

Quickly update messages with textile prints.

- **Easy assembly**

Modular elements that one person can assemble in minutes.

- **Premium effect**

Modern design that makes your brand stand out from the competition.



## LED BOX

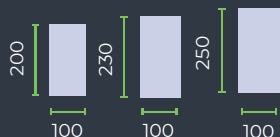
A modern advertising system that attracts attention with double-sided, illuminated graphics. Available in standard sizes or made-to-order, including RAL colors matched to your brand identity.

### Advantages:

- Visibility – LED-lit graphics, always clear and readable.
- Quick assembly – built-in magnets, no tools required.
- Flexibility – certain modules can be combined into different shapes and sizes using available connectors.
- Durability – stable aluminum construction with foldable legs.

**SUB**  **Suitable materials:** Ledtex, Sambex

### Example system dimensions [cm]:



If you have any questions,  
please contact your account  
manager.

## LED BOX FLEX

LED BOX FLEX is an innovative solution based on a hinged construction. Thanks to integrated LED lighting and hidden wiring in the profiles, the system looks modern and elegant. Graphics are mounted using silicone tape, ensuring a neat appearance of the entire display.

### Advantages:

- Double-sided display – maximum visibility of your message.
- Integrated LED lighting – even illumination of the graphics.
- Quick assembly – the system unfolds in a single motion.
- Easy graphic replacement – fast and convenient print installation.
- Modular connectivity – built-in magnets in the frame allow sequential assembly of modules.

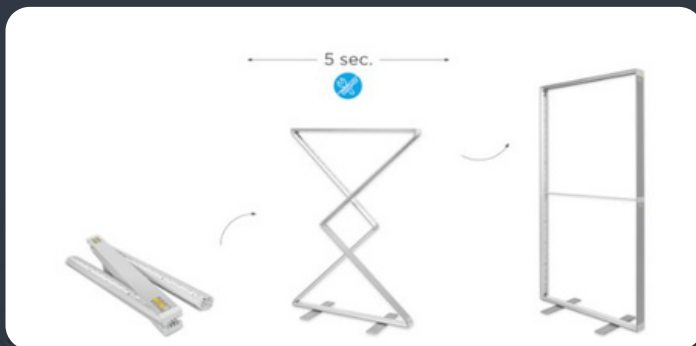
SUB



### Suitable materials:

Ledtex, Sambex

Example  
system  
dimensions  
[cm]:



If you have any questions,  
please contact your  
account manager.



## ■ LUMIX System

The LUMIX system makes graphics striking, dynamic, and visible from a distance. Its elegant construction combined with easy assembly allows you to create a professional presentation in minutes – perfect for trade shows, events, and retail spaces.

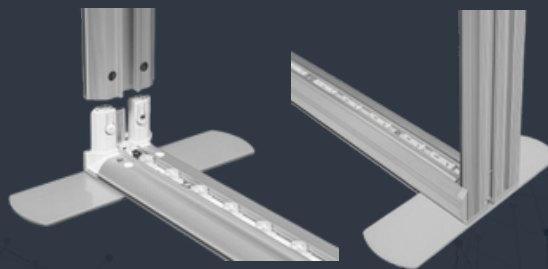
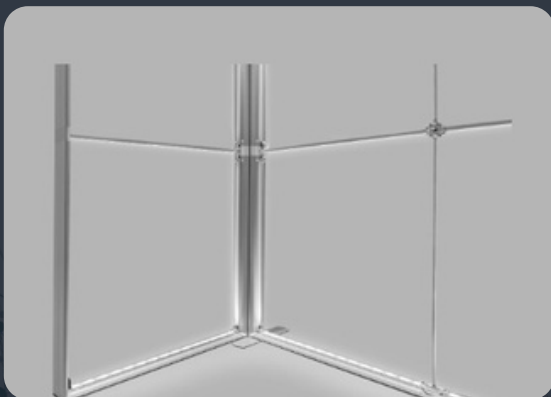
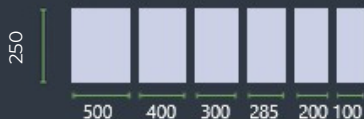
### Advantages:

- Tool-free assembly – quick and intuitive installation.
- LED lighting – impressive graphic presentation.
- Graphic replacement – easy modification of the setup.
- Wheeled bag – convenient transport and storage.
- Double-sided display – maximum message visibility.
- Modern design – elegant appearance and solid construction.

**SUB**  **Suitable materials:** Ledtex, Sambex

### System

dimensions [cm]:



If you have any questions,  
please contact your account  
manager.

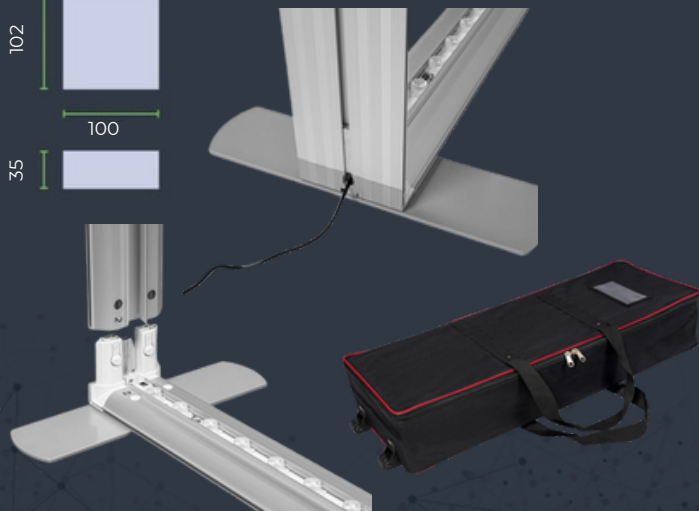
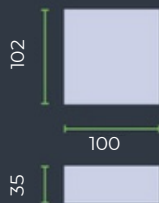
## ■ LUMIX Counter

A modern counter with an elegant 12 cm aluminum profile and LED lighting. Easy to use, mobile, and perfect for trade shows and events.

### Advantages:

- Illuminated graphics – impressive display in any environment.
- Double-sided panel – visibility from both sides.
- Tool-free assembly – quick and intuitive installation.
- Silicone mounting tape – easy and clean graphic replacement.
- 12 cm aluminum profile – stable and modern construction.
- Wheeled bag – convenient transport and storage.

### System dimensions [cm]:



SUB



**Suitable materials:** Ledtex, Sambex



If you have any questions,  
please contact your account  
manager.

## ■ LED BOX Counter

Lightweight, illuminated, and mobile counter, perfect for trade shows, events, and reception areas.

### Advantages:

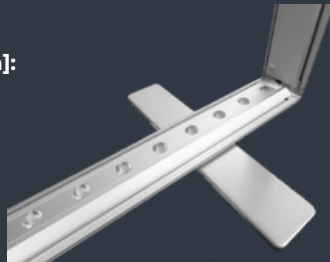
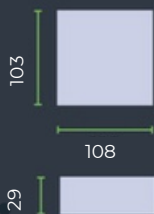
- Illuminated and double-sided – maximum graphic visibility.
- Lightweight and mobile – easy transport in a carrying bag.
- Tool-free assembly – quick and simple in seconds.
- Silicone tape – easy and neat graphic replacement.
- 8 cm aluminum profile – stable and modern construction.

SUB



**Suitable materials:** Ledtex,  
Sambex

### System dimensions [cm]:



If you have any questions,  
please contact your account  
manager.



## LED BOX WALL

In addition to classic advertising walls, we also offer wall-mounted panels that impress with their striking design and guarantee a “wow” effect.

### Advantages:

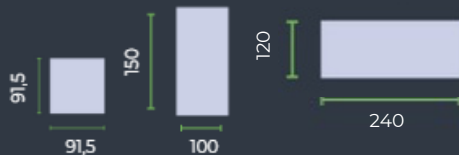
- Illuminated and size-adjusted – “wow” effect.
- High-quality aluminum frame – anodized or powder-coated.
- Quick graphic replacement – easy visualization update.
- Individual LED power – perfect illumination.

SUB



**Suitable materials:** Ledtex,  
Sambex

### Example system dimensions [cm]:



If you have any questions,  
please contact your account  
manager.



**Thank you for reviewing our catalog.**

We are ready to support your brand at every stage of advertising activities.

Feel free to contact us – we will gladly answer all questions and advise on the best solutions.

PrintXL Sp. z o.o.  
ul. Czochralskiego 6  
61-248 Poznań, Poland

+48 605 555 876  
info@printxl.pl  
www.printxl.pl

